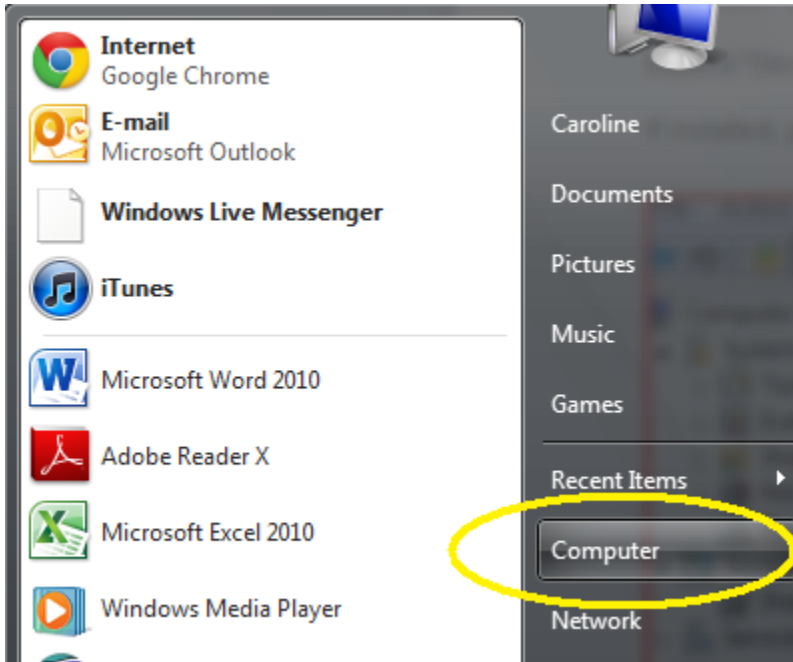


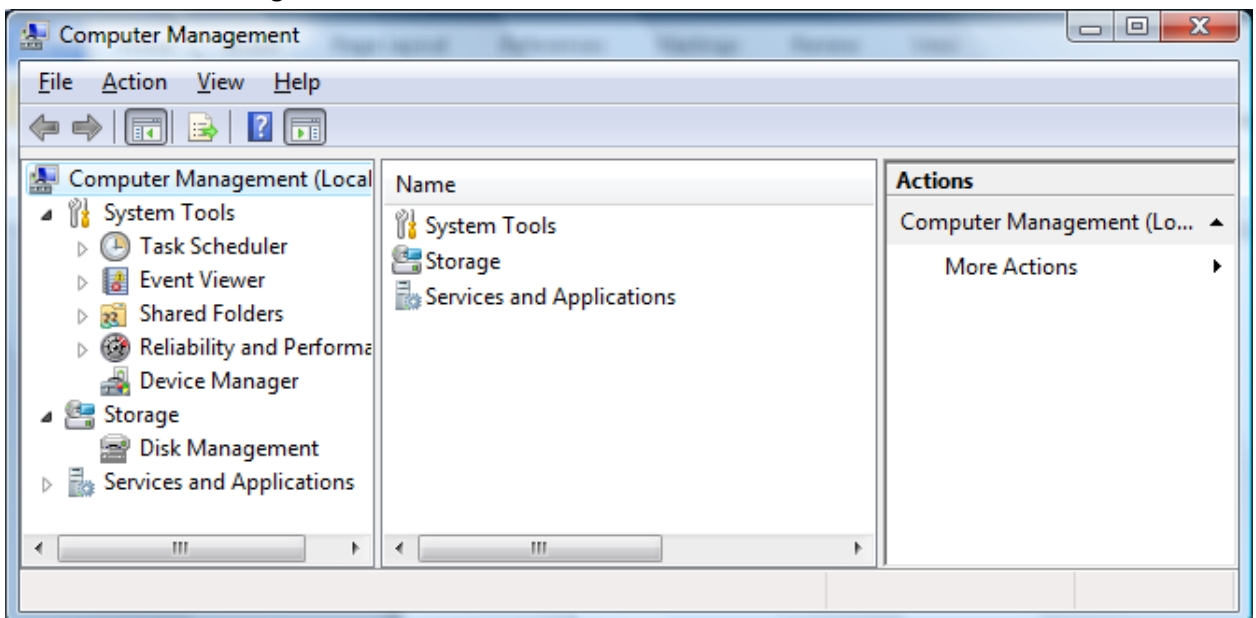
## Mermaid USB to Serial port adapter setup :

### To ensure COM port is working correctly:

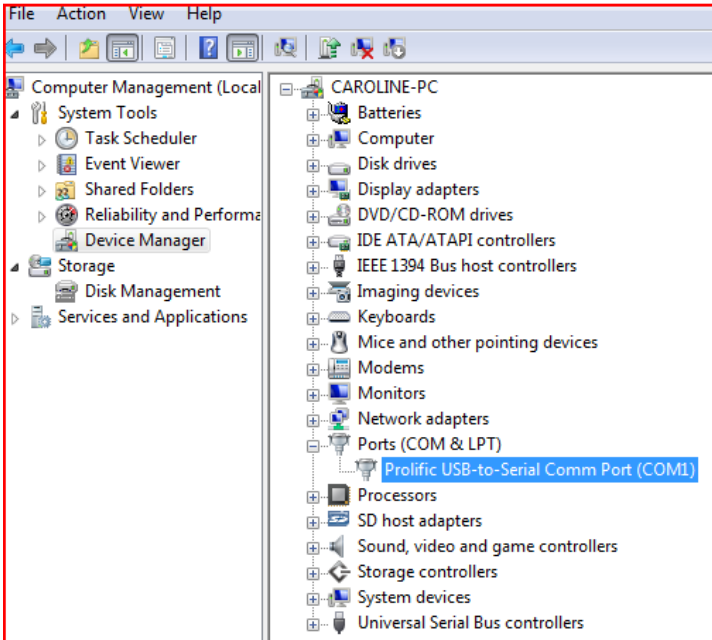
1. Right-click "Computer" icon (My Computer on Windows XP desktop) and click "Manage"



2. Click on "Device Manager"



3. Click on "Ports (COM & LPT)"

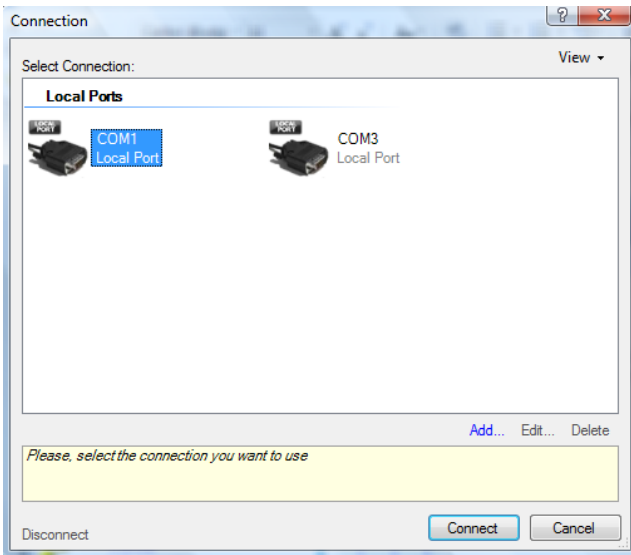


If installed, you should see “Prolific USB-to-Serial Comm Port (COM...)”

The icon should appear as above. Ensure that the device is not disabled or that it has a problem (indicated by red or yellow warning icon)

Take note of the COM port number (the number at the end after the word “COM”)

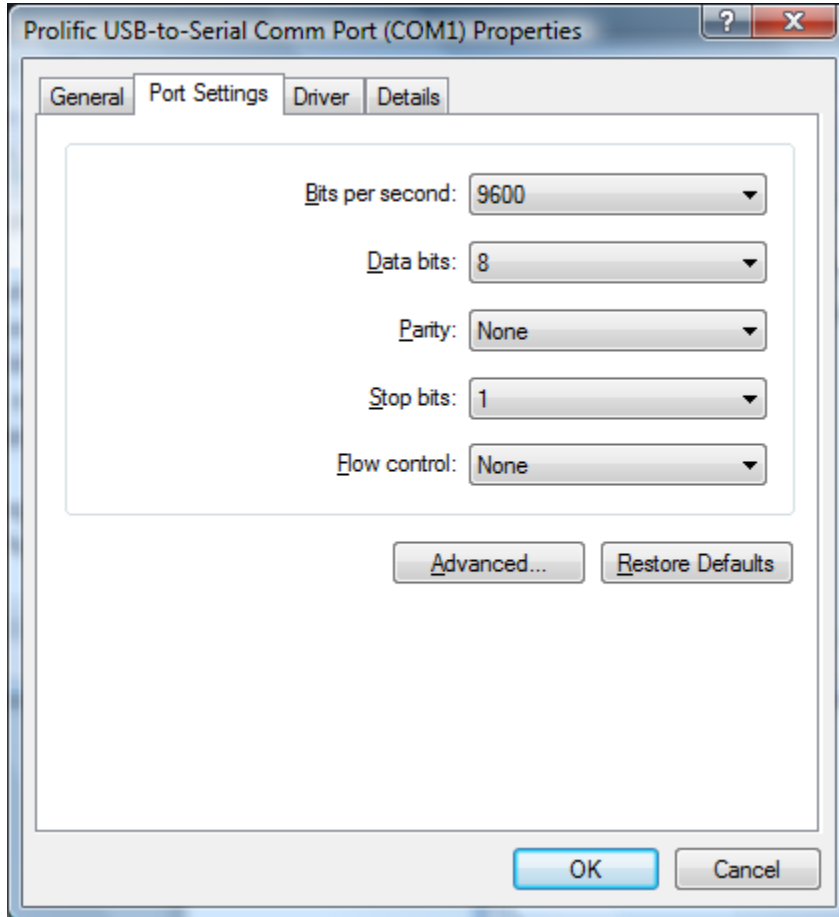
Use this port number when selecting the COM device within in the Mermaid software.





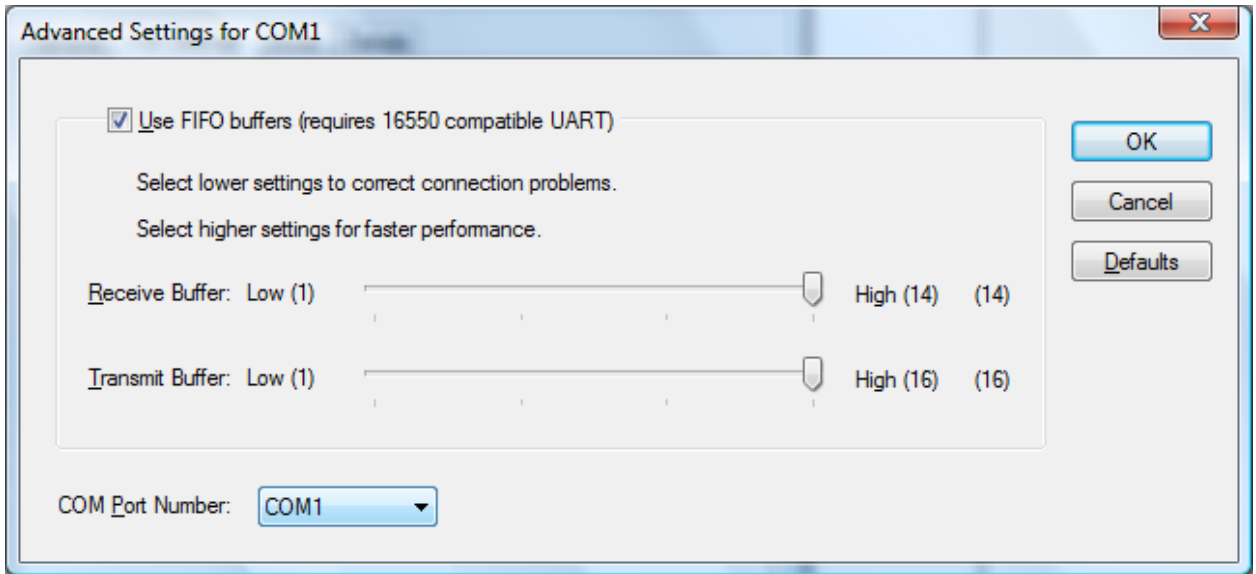
If the problems persists, you can try to change the COM port number in case of conflict:

Under Device Manager -> Ports (COM & LPT), right click the “Prolific USB-to-Serial Comm Port” and click “Properties”



Click the “Port Settings” tab

Click “Advanced” button



Select a new the COM Port Number from the drop down list (ensure that the COM port is not in use.) Also ensure this COM port is selected in the Mermaid software.